



# Electronic Data Devices

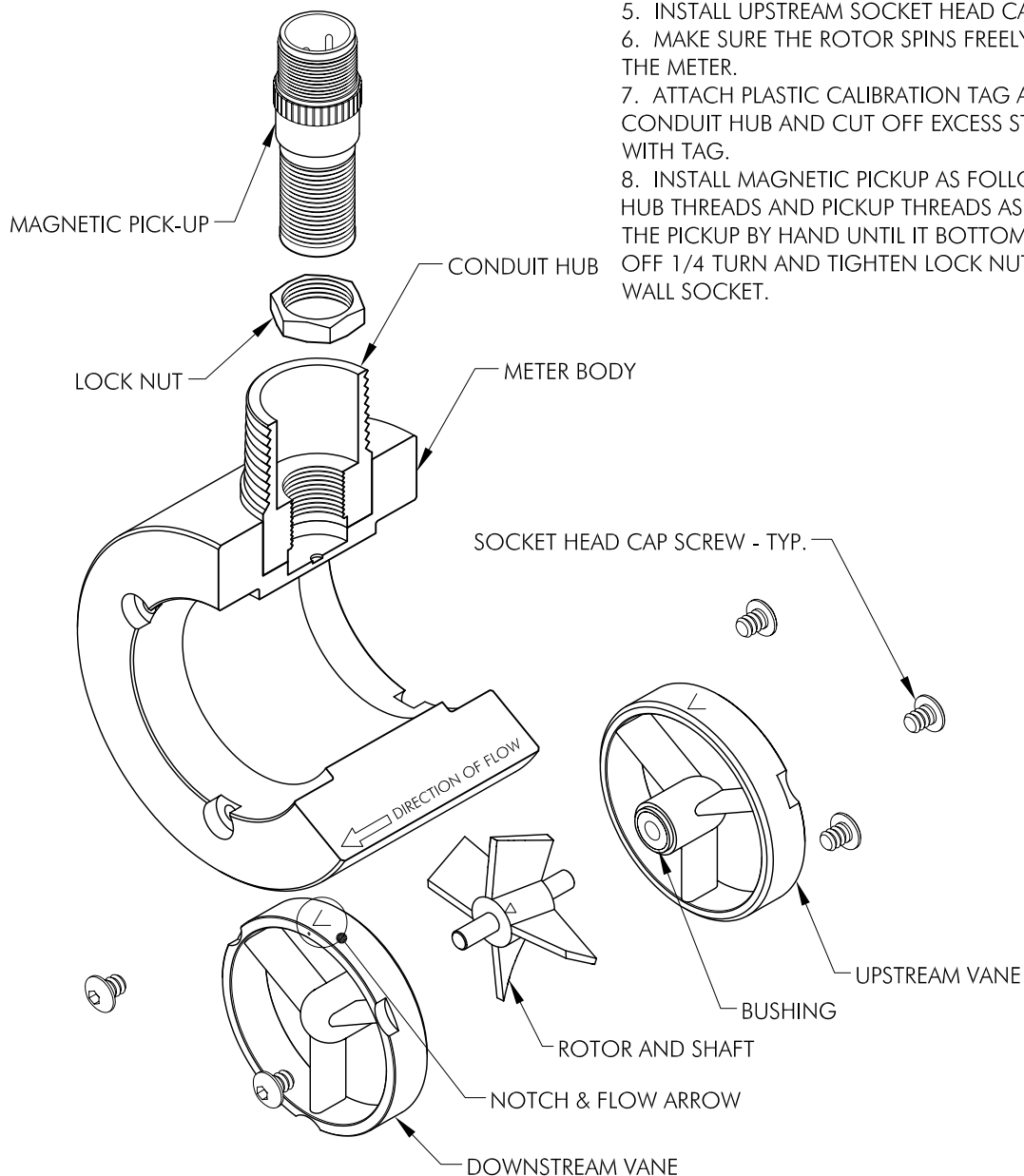
## Between Flange & Ring Joint Repair Kit Installation Instructions

### KIT REMOVAL

1. REMOVE MAGNETIC PICKUP BY LOOSENING LOCK NUT USING 3/4" THIN WALL SOCKET, THEN UNSCREW FROM METER BODY. THIS PROCEDURE WILL HELP TO PREVENT PICKUP DAMAGE DURING THE REPAIR PROCEDURE.
2. REMOVE SOCKET CAP SCREWS FROM BOTH ENDS OF METER USING HEX KEY.
3. REMOVE UPSTREAM AND DOWNSTREAM VANES, TAPPING WITH SOFT ROD IF NECESSARY TO DRIVE OUT VANES.
4. REMOVE ROTOR FROM BODY.
5. CLEAN THE METER BODY BORE AS REQUIRED BRINGING IT BACK TO A LIKE NEW CONDITION.
6. CLEAN SCREW HOLES AND COUNTER BORE FOR VANE TO ALLOW THE VANE TO PROPERLY SEAT.

### KIT INSTALLATION

1. INSTALL DOWNSTREAM VANE SO ARROW ON VANE CORRESPONDS WITH DIRECTIONAL ARROW ON THE METER BODY. THE DIRECTIONAL ARROW AND NOTCH ON THE VANE SHOULD ALIGN WITH THE TOP OF THE METER BODY, WHERE THE CONDUIT HUB IS LOCATED.
2. INSTALL THE DOWNSTREAM SOCKET HEAD CAP SCREWS.
3. INSTALL ROTOR BEING SURE THE ARROW IS PROPERLY ALIGNED, AND THE SHAFT SEATED IN THE VANE BUSHING.
4. INSTALL UPSTREAM VANE, ALIGNING THE VANE THE SAME AS THE DOWNSTREAM VANE. SPIN THE ROTOR TO ALLOW SHAFT TO EASILY ENTER THE VANE BUSHING. *DO NOT USE FORCE TO PUSH THE VANE BEARING OVER THE ROTOR SHAFT.*
5. INSTALL UPSTREAM SOCKET HEAD CAP SCREWS.
6. MAKE SURE THE ROTOR SPINS FREELY BEFORE INSTALLING THE METER.
7. ATTACH PLASTIC CALIBRATION TAG AROUND THE CONDUIT HUB AND CUT OFF EXCESS STRAP LENGTH FLUSH WITH TAG.
8. INSTALL MAGNETIC PICKUP AS FOLLOWS: CLEAN PICKUP HUB THREADS AND PICKUP THREADS AS NEEDED. SCREW IN THE PICKUP BY HAND UNTIL IT BOTTOMS OUT, THEN BACK OFF 1/4 TURN AND TIGHTEN LOCK NUT WITH 3/4" THIN WALL SOCKET.



Phone  
432-366-8699



Fax  
432-366-1106

P.O. Box 12128  
Odessa, Texas  
79768  
USA

E-mail  
rkw@eddevices.com

Website  
www.eddevices.com